

Original BMW Accessory.

Installation Instructions.



Aluminium Running boards retrofit kit BMW X5 Series (E 70)

Retrofit kit No. 51 71 0 421 781 Aluminium running boards retrofit kit

Installation time

The installation time for the aluminium running boards retrofit is approx. 2 hours.
The installation time may vary depending on condition of the car and the equipment in it.

Important information

These installation instructions are primarily designed for use within the BMW dealership organisation and by authorised BMW service companies.

In any event, the target group for these installation instructions is specialist personnel trained on BMW cars with the appropriate specialist knowledge.

All work must be completed using the latest BMW repair manuals, circuit diagrams, servicing manuals and work instructions, in a rational order, using the prescribed tools (special tools) and observing current health and safety regulations.

If you experience installation or function problems, limit troubleshooting to approx. 0.5 hour for mechanical or 1.0 hour for electrical work.

In order to reduce costs and avoid any additional expense, send a query immediately to the Technical Parts Support via the Aftersales Assistance Portal (ASAP).

Please provide the following information:

- Chassis number
- Part number of the retrofit kit
- A precise description of the problem
- Work steps already carried out

Do not archive the hard copy of these installation instructions since daily updates are made by ASAP.

Installation information

All pictures show LHD cars; proceed accordingly on RHD cars.

Contents

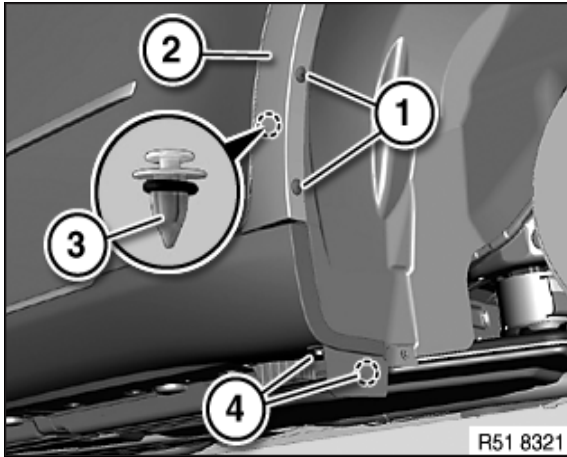
Section	Page
1. Parts list	3
2. Retrofit running boards	4
3. Watertight fixings for rocker panel support	6

1. Parts list

Legende

Partnumber	Amount	Description
83 19 0 152 031	1	Bonding and sealing compound for window
01 29 0 432 167	1	Installation Instruction
51 13 2 495 559	4	Clip
51 63 3 412 262	22	Hex bolt
51 77 7 163 555	1	Left door sill cover
51 77 7 163 556	1	Right door sill cover
51 77 7 167 707	1	support piece, sill, left
51 77 7 167 708	1	support piece, sill, right
51 77 7 167 709	1	Footplate left
51 77 7 167 710	1	Footplate right
51 77 7 171 002	26	Clip
51 77 7 171 003	16	Clip
51 77 7 177 063	1	Insert footplate, left
51 77 7 177 064	1	Insert footplate, right
07 14 7 192 142	20	Isa screw

2. Retrofit running boards



Step 1

Release expander rivets (1) on wheel arch trim at rear.

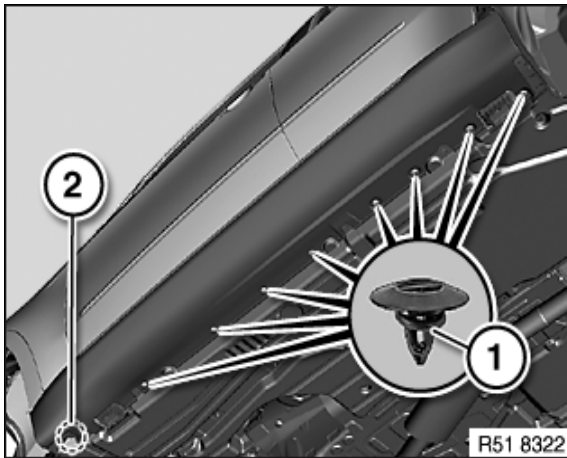
Detach trim (2) at clip (3).

Release screws (4).

Installation:

Replace expander rivets (1).

If necessary, replace faulty clip (3).



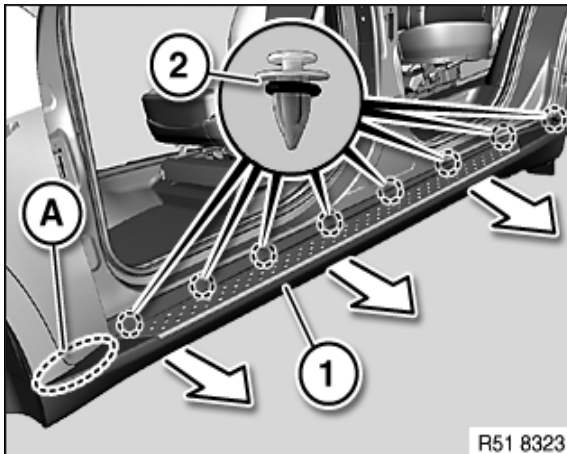
Step 2

Release clips (1) and screw (2).

Installation:

If necessary, replace faulty clip (1).

Fit clips (1) with O-rings.



Step 3

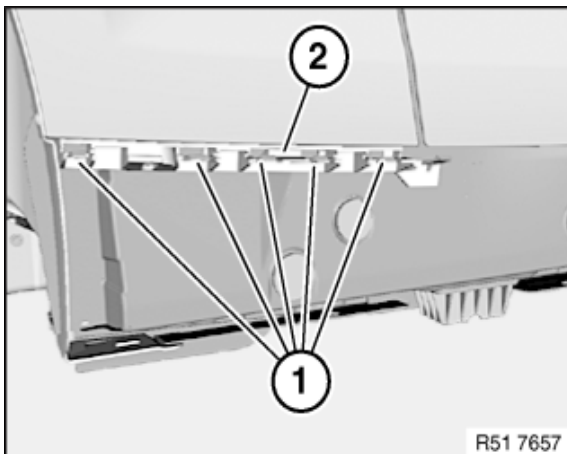
Unclip panel (1) in area (A).

Open doors, detach panel (1) at clips (2) and remove in direction of arrow.

Installation:

If necessary, replace faulty clip (2).

Fit clips (2) with O-rings.

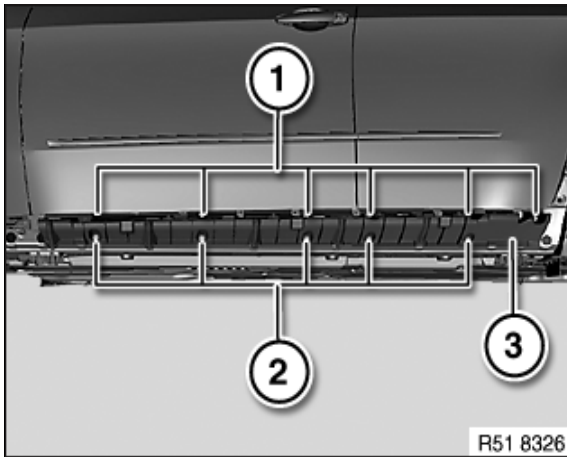


Step 4

Installation:

Inspect catches (1) on holder (2) these must not be damaged.

2. Retrofit running boards



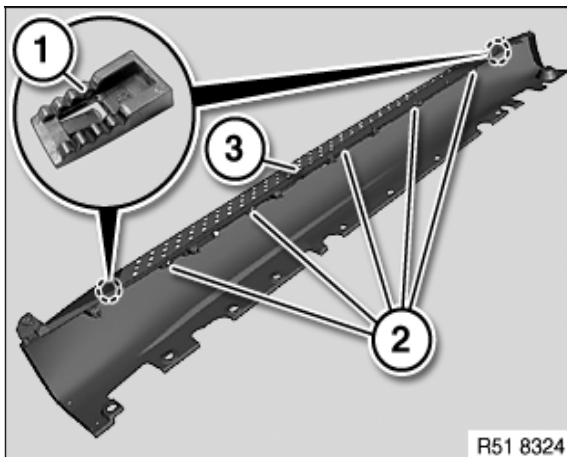
Step 5

Release screws (1 und 2).

Remove support part (3).

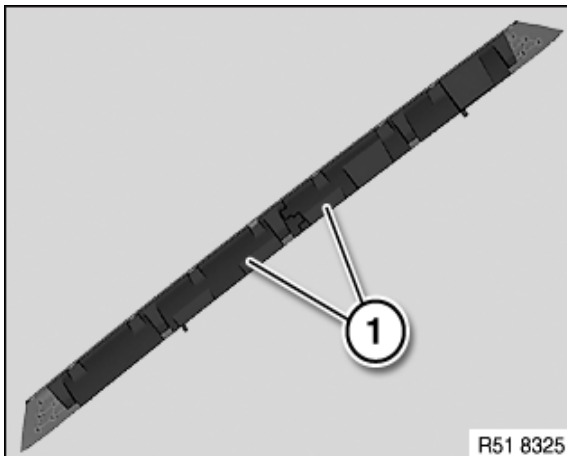
Tightening torque 51 71 6AZ.

Important: Sealer must be applied around the fixing holes before mounting the running board to the vehicle. Please see pages 6 and 7 for this important step.



Step 6

Fix running board (3) with screws (2) and mount clips (1).



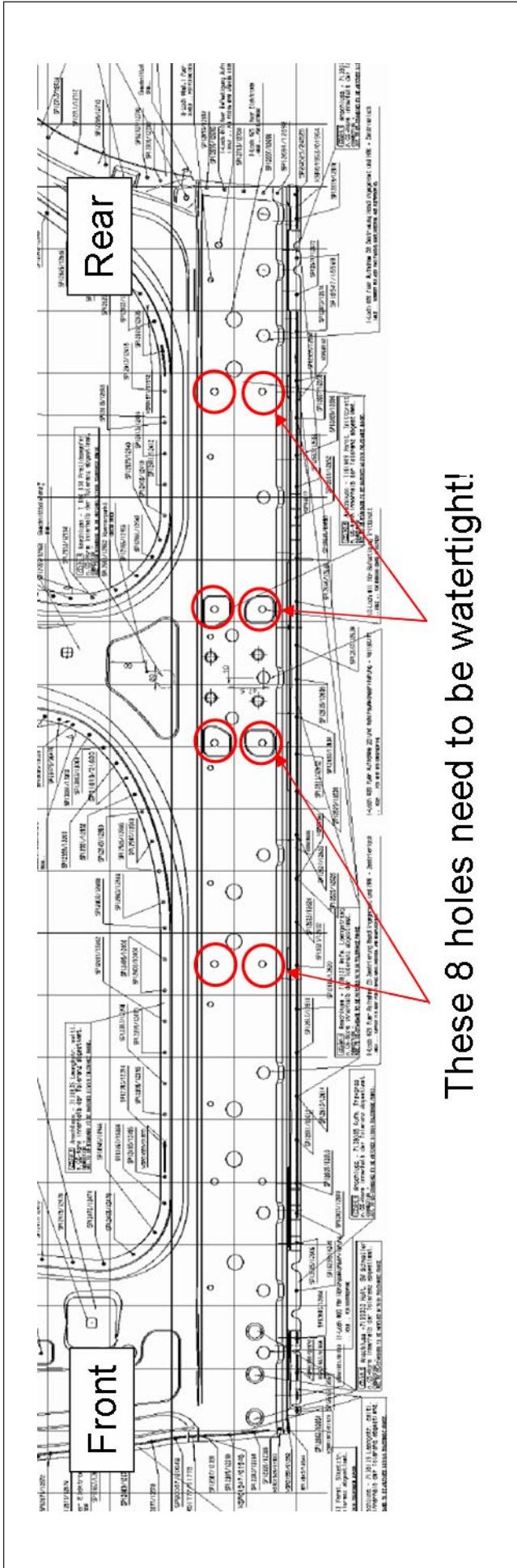
Step 7

Installation:

Make sure inserts (1) are correctly seated.

Finish the assembly of the sill covers with the running boards by using steps 1 to 3 in reverse order.

3. Watertight fixings for rocker panel support

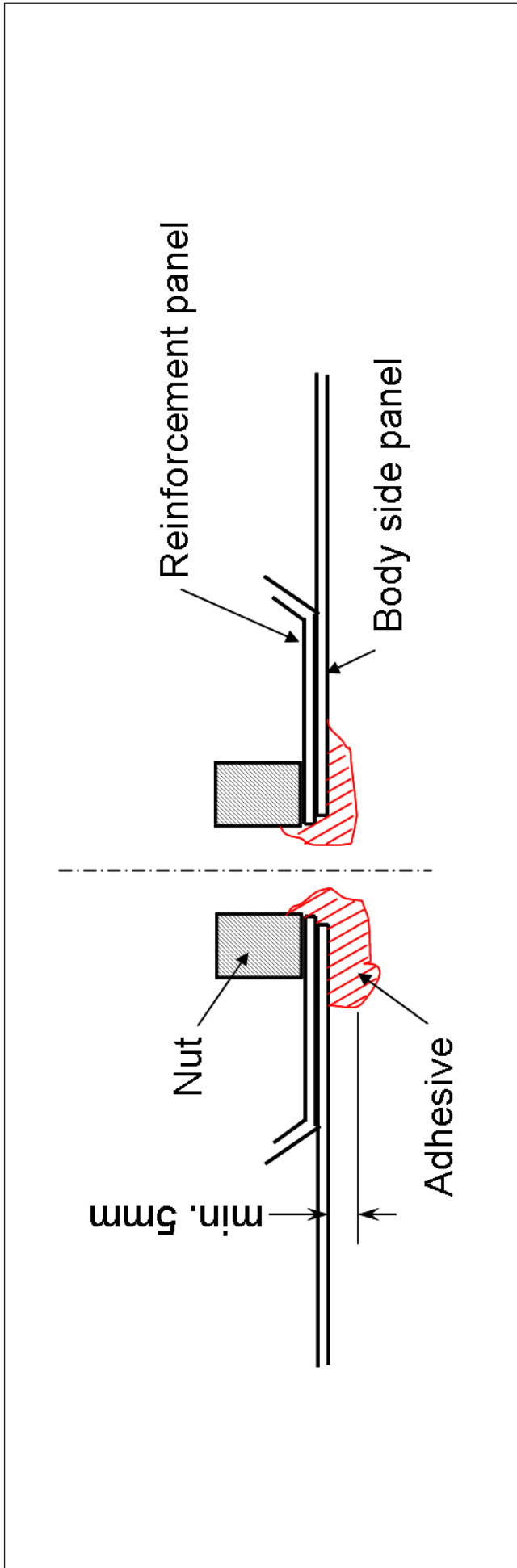


These 8 holes need to be watertight!

Method

- Clean the surface, apply windshield adhesive into and around the 8 centre fixing holes (marked red above).
- Insert screws and tighten per normal process.
- Same applies for left and right sides.

3. Watertight fixings for rocker panel support



Method

- Clean the surface, apply windshield adhesive **into and around** the fixing holes (marked red above).

The aim is to seal the small gaps between the body panels and the nut.

- Adhesive should be at least 5mm deep when applied.