

*Installation (retrofitting) BMW combox media for example BMW X6 E71 2009 year (Step by step instructions, photo report, how to set the combox, including the process of coding (programming))*

## Part Two: Coding

For coding, we need to install a software package **BMW INPA EDIABAS** likely to have the necessary programs in the cable attached to the test drive on it you will find instructions on installation. Or you can download the program on the network, scoring in a search engine's name, you can easily find your links.

I used the following versions: INPA v5.0.2; EDIABAS v7.2.0; NCS expert v3.1.0

We will only use one set of software packages: NCS expert

Do not attempt to install this software on Windows 7 64bit in compatibility mode for XP, the program still will not work, since it is not even the 32 and 16ti bit application.

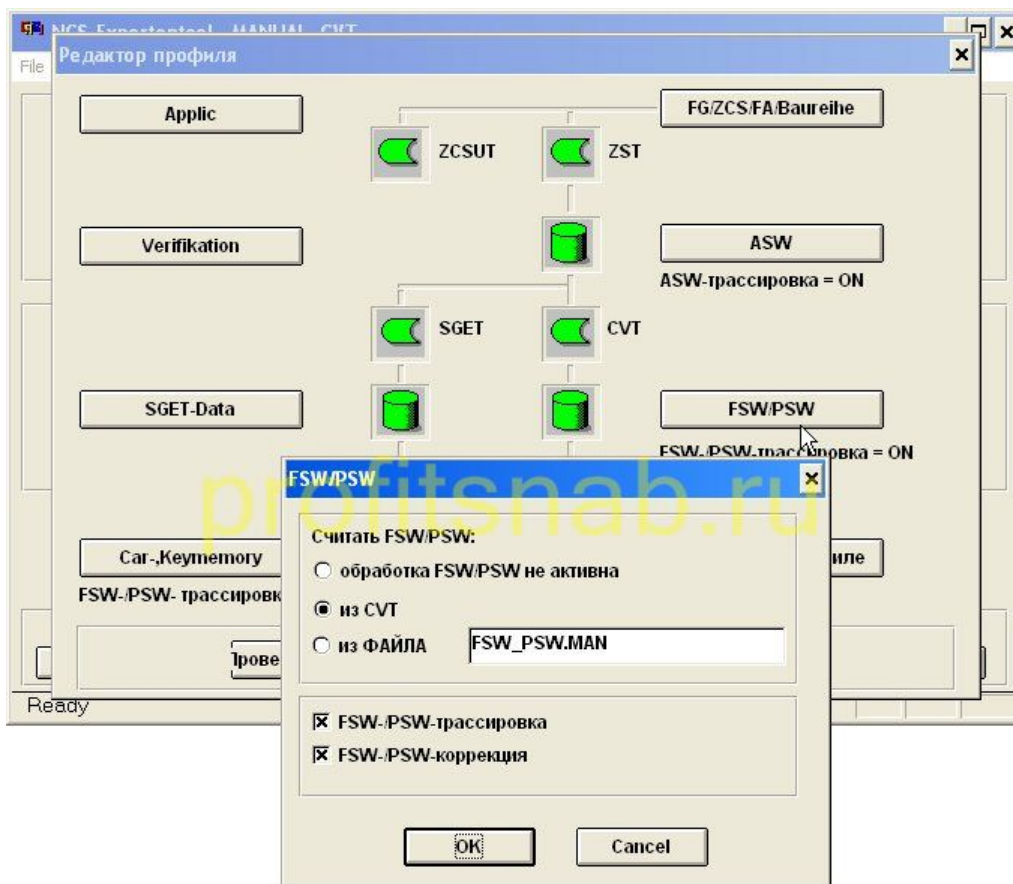
You need a laptop with XP or emulation XP.

In this guide, I will teach you to work in this program, the Internet is enough instructions on how to use it, I will just describe what specifically needs to be done and the order of operations, you could just repeat it. If something goes wrong you have, look for instructions in the network and understand why.

So you have installed the program. Now you need to update the data files for your model of car (in my case, E70). Download the latest version of the data files for the SP-Daten program ISTA, respectively, body E70 (at the time when I installed, the last thing I found was a SP-Daten v 2.47.1) and copy them in accordance with the instructions on the correct folder.

In addition to the NCS expert, you must have set up three

profiles: **ExpertMode**, **Manual** (how to configure your answer search engine) and **Manual CVT**(same profile as MANUAL, but the profile settings must be set to read FSW \ PSW of CVT) , edit profile MANUAL is not difficult, you need to open the profile editor (password REPXET) in the menu File, click the FSW / PSW and put an end to the point "of the CVT"

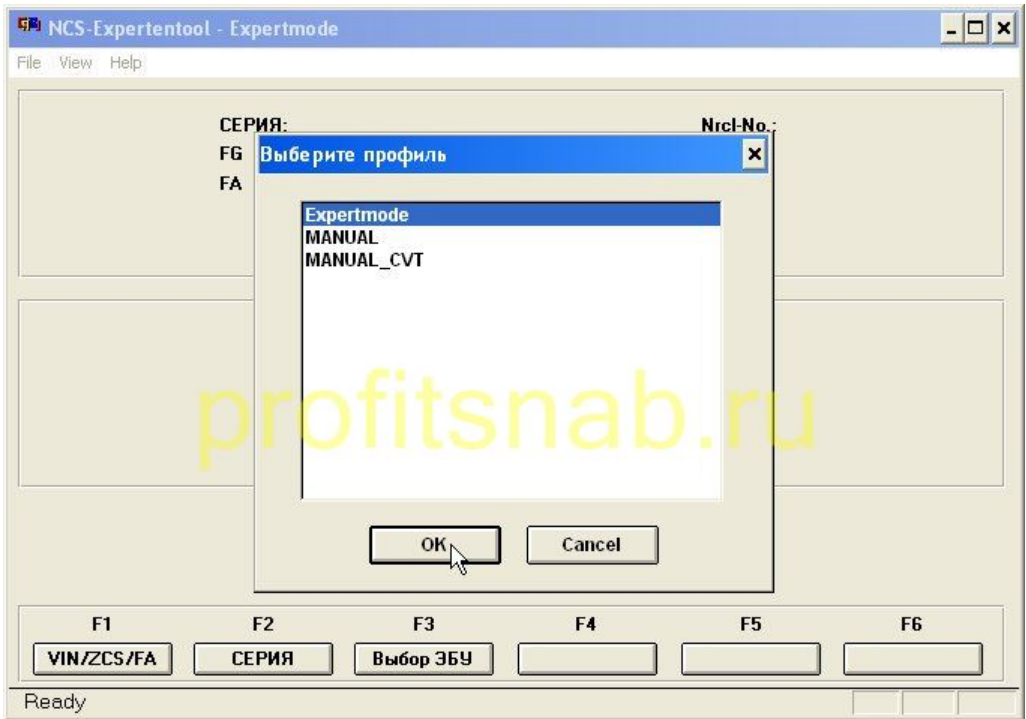


In general, the plan is as follows:

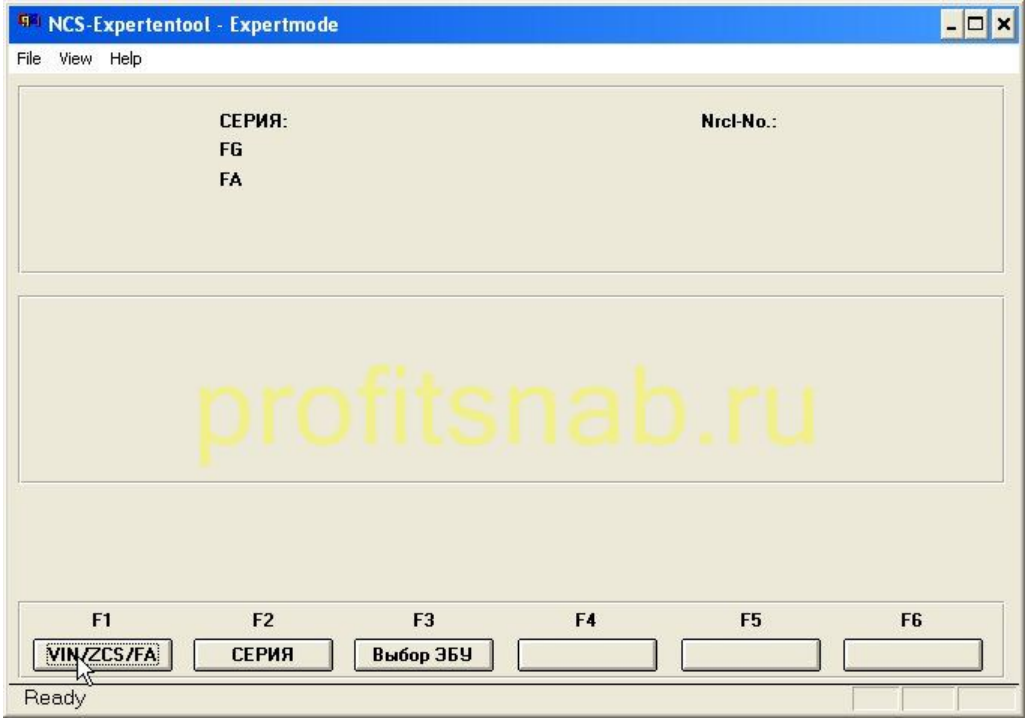
1. Change the Vehicle Order (VO) car, adding and removing the necessary FA (optional), and changing the age of the car a little "rejuvenate" it into blocks CAS and FRM
2. Encoded blocks CIC and MEDIA (combox) mode Expertmode under the new VO
3. Encode block CIC mode MANUAL, to enable the menu Connected drive and Online Browser.
4. Encode block MEDIA mode MANUAL, to change its internal VIN (only if your car was not originally made for the Russian market) and open access to Internet services for your car. (This item should you do if you get a message that the internet in your country is not supported.)
5. Encode block KOMBI mode Expertmode under the new VO, to disable the error button SOS.
6. Bonus, I'll show you how to include useful features such as automatic folding mirrors, when you lock the car, closing the trunk lid with a button in the cabin and on the key, as well as how to turn on a comfortable exit (by pressing the stop button the engine for more than 2 seconds , the machine is placed on the parking lot, opens the central locking and the key is released).

Start:

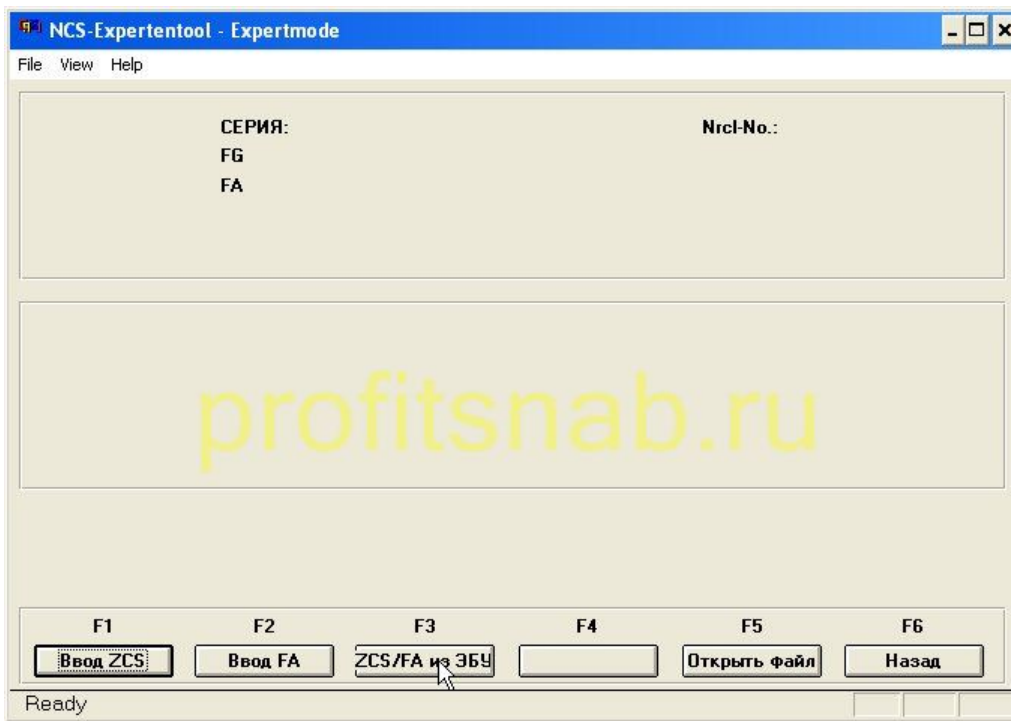
- 1.1 Connect the diagnostic cable to the vehicle
- 1.2 Run NSC expert Tool
- 1.3 In the upper left corner of the pressing File, click Load Profile (load profile)
- 1.4 choose Expertmode click OK



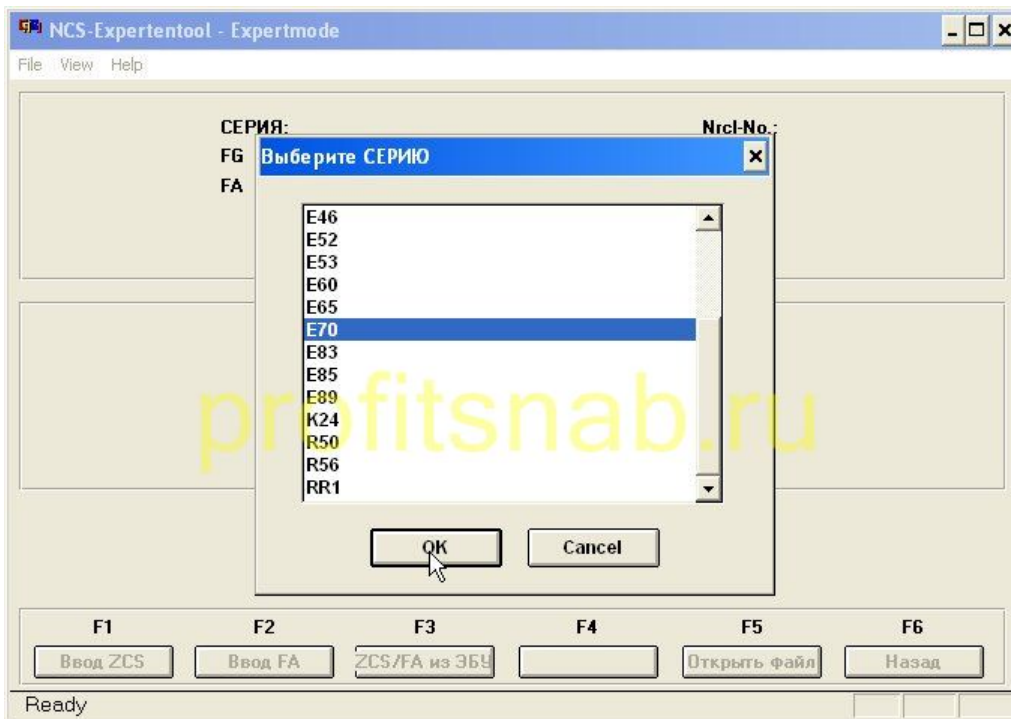
1.5 press F 1 or VIN / ZCS / FA



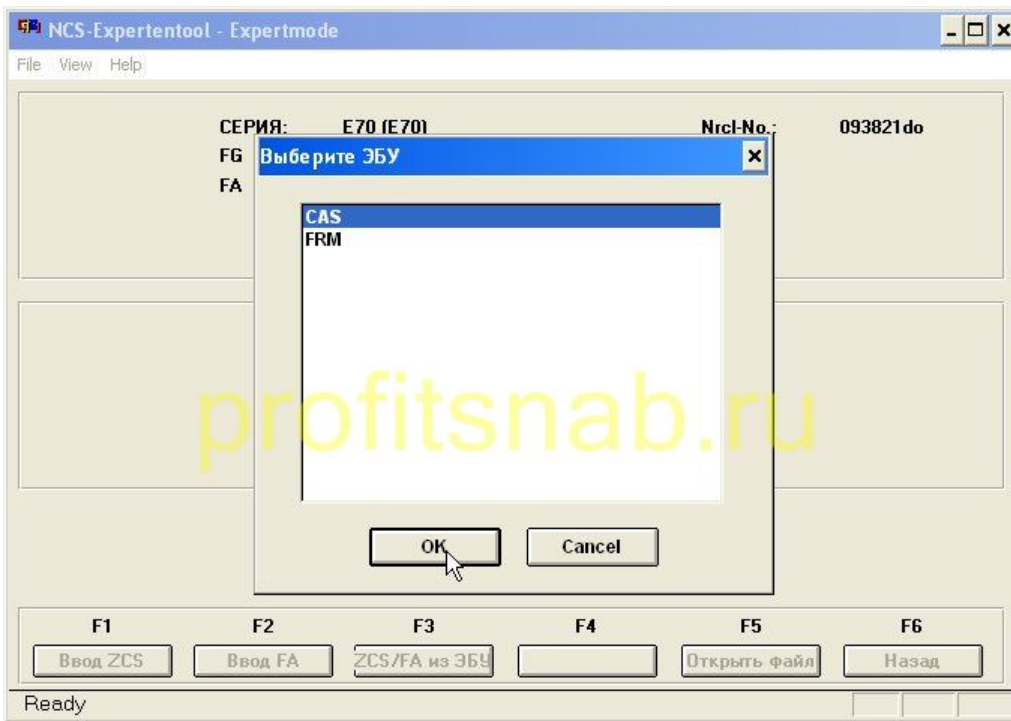
1.6 press F 3 or ZCS / FA from ECU



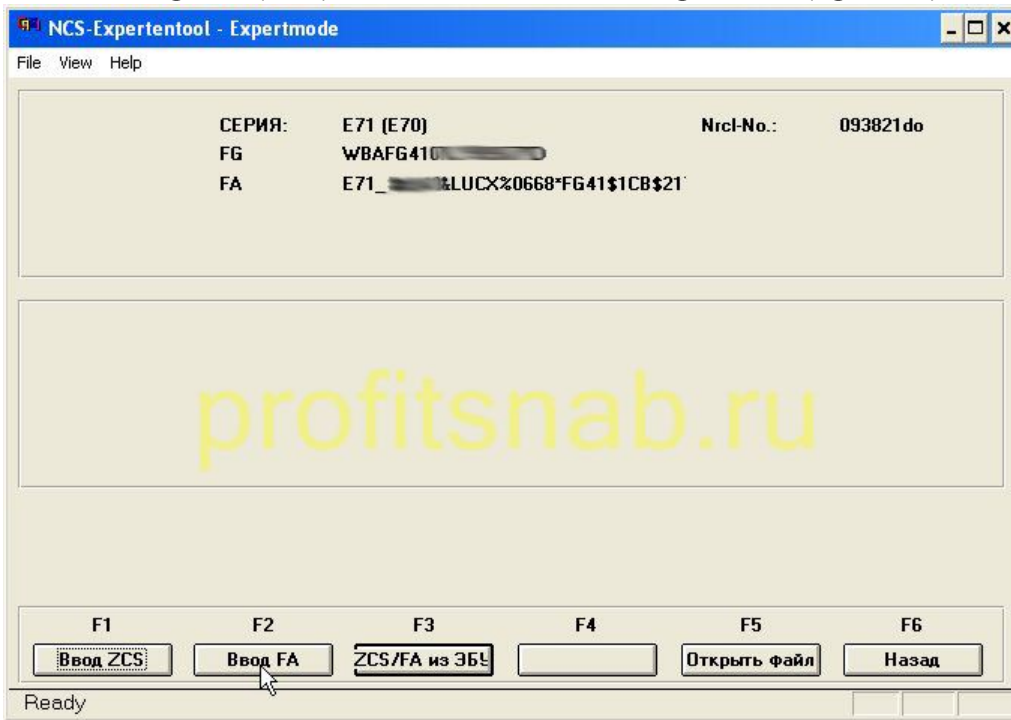
1.7 select the series of the car (in my case E 70, as E 71 refers to it) and click OK



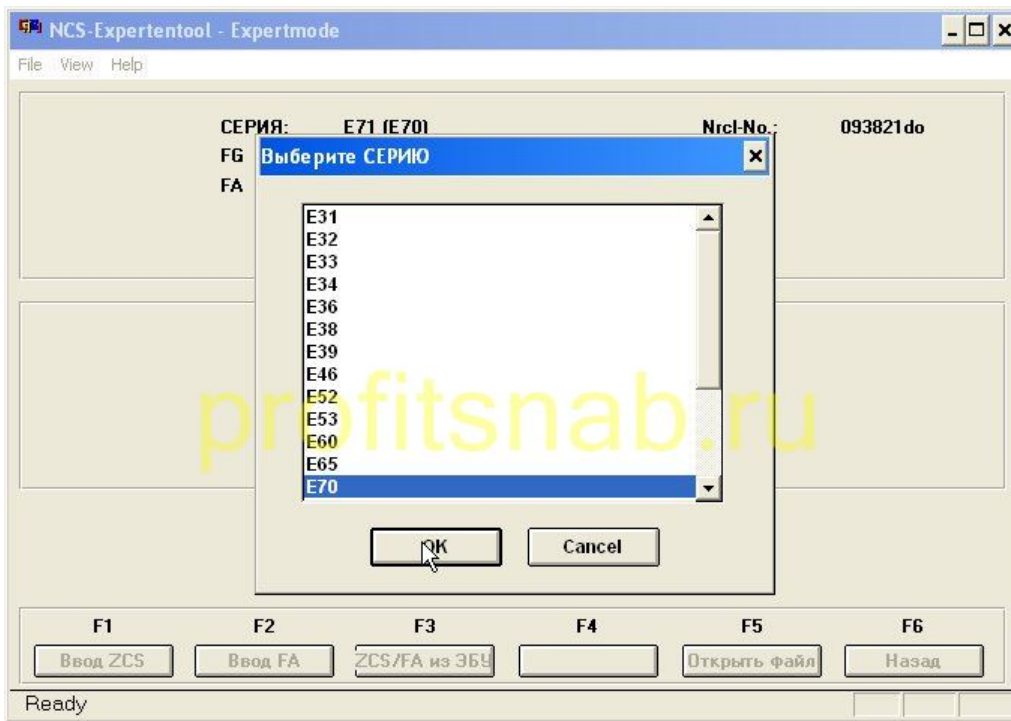
1.8 Choose any unit from which to read the data (CAS or FRM has no value), such as CAS and click OK



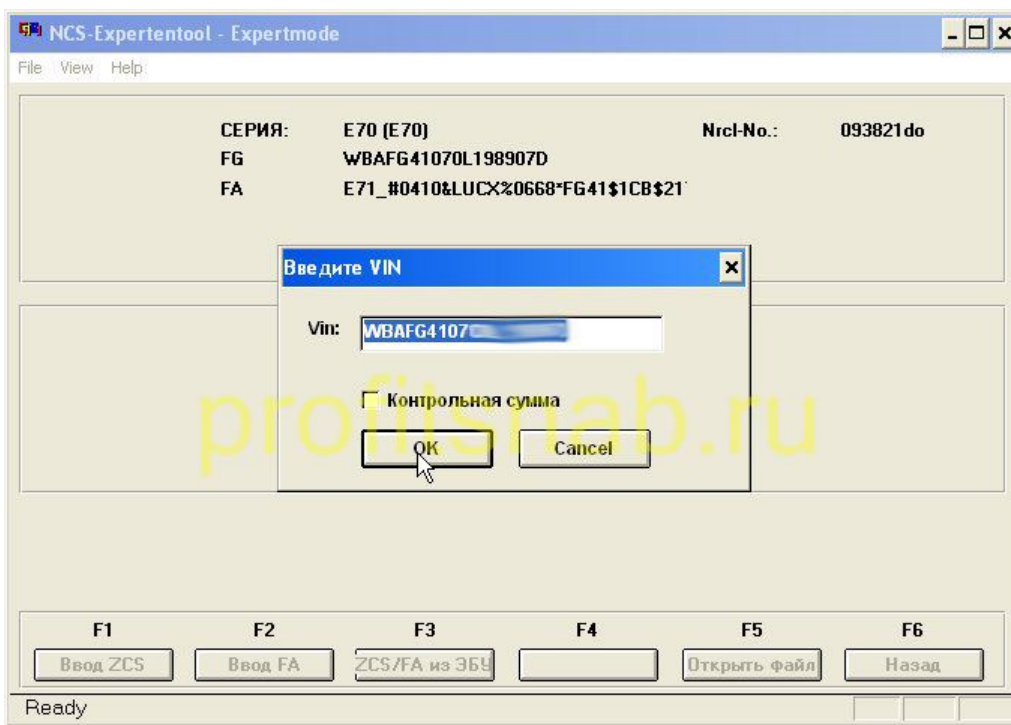
1.9 Now the program makes the first reading and determines your VIN number and a list of options ( FA ), it is this list, and we'll edit, press F 2 (input FA )



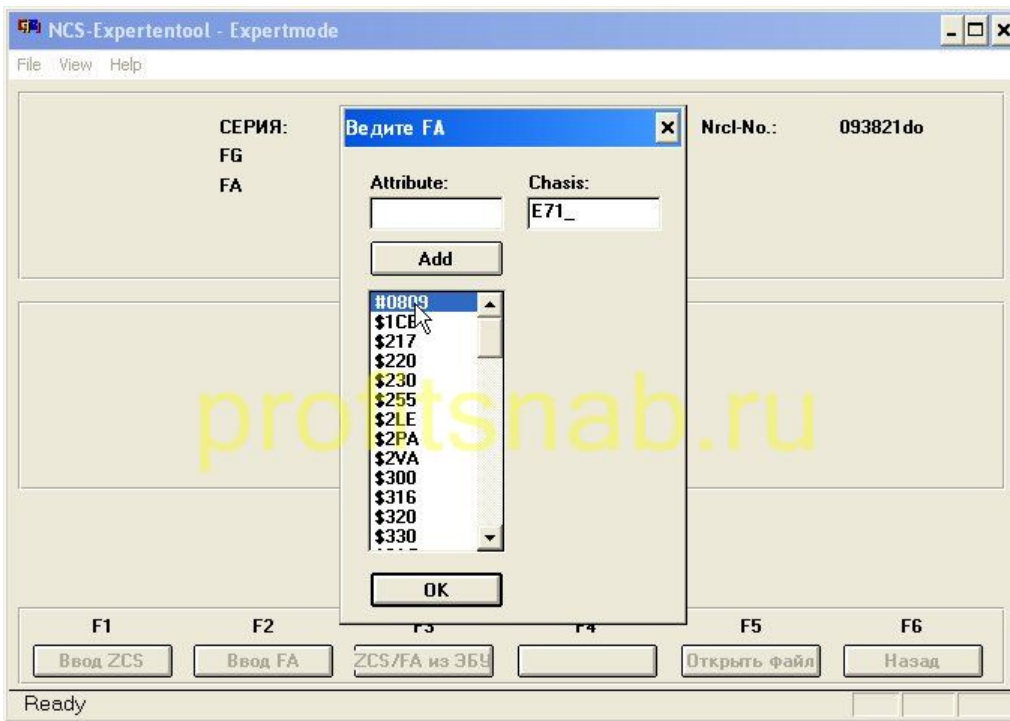
1.10 Again select the series car (I E 70), and click OK



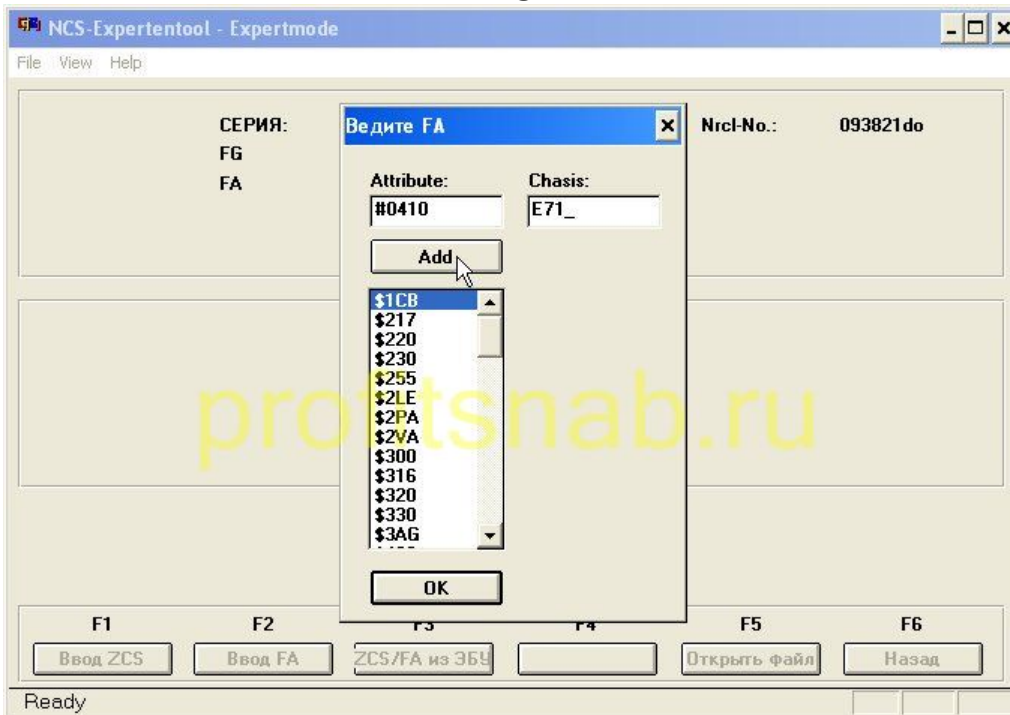
1.11 The program will prompt you for wine does not change anything, just click OK



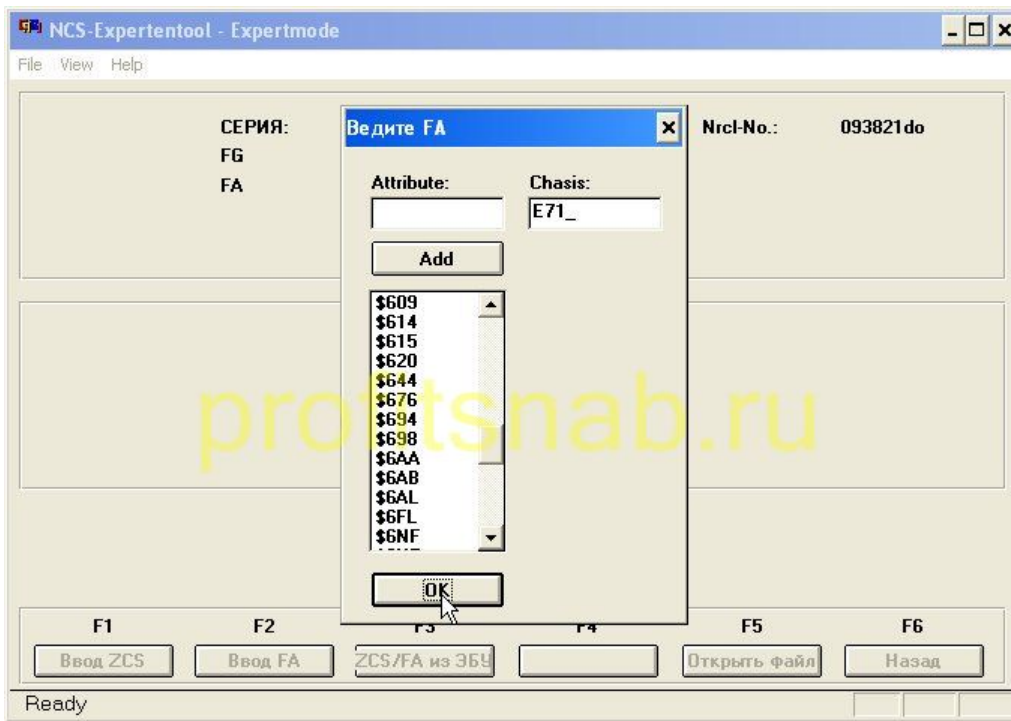
12.1 The window options that we will edit the first option - model month \ year, if your car is older than 2010, you need to "rejuvenate" so that you can add a new option combobox, if your car is under this paragraph does not change, So, click on the first item (mine is # 0809 - August 2009) and hit delete on your keyboard



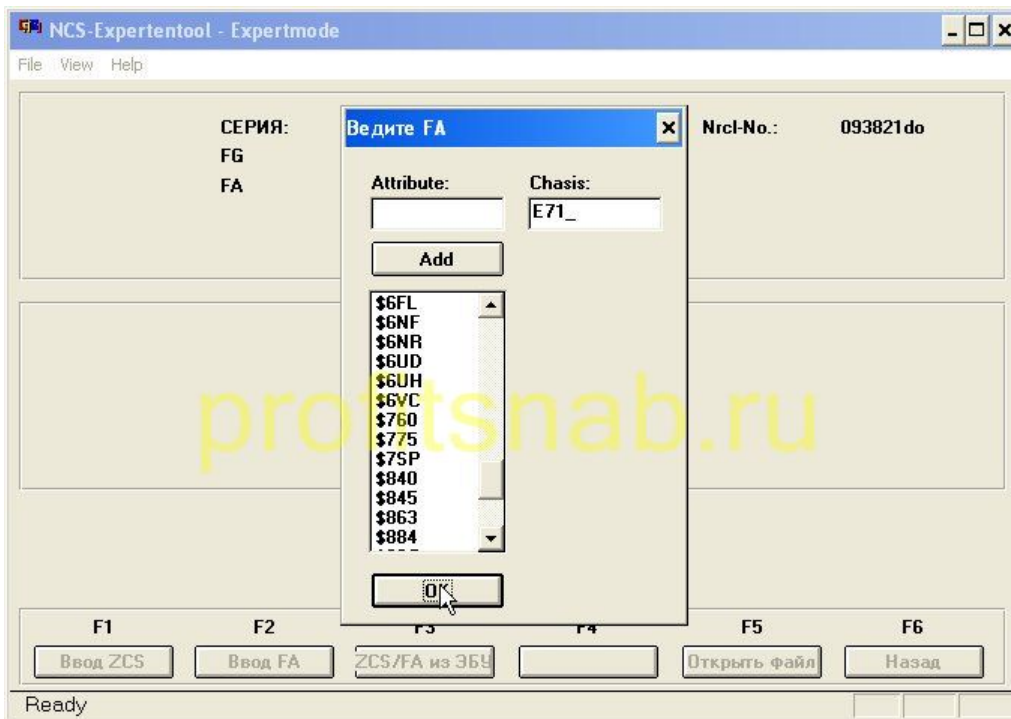
1.13 Now in the Attribute write a "new age" # 0410 and click Add



1.14 Next, the same way, delete the following values: \$ 633, \$ 612, \$ 616, and add the following instead: \$ 614, \$ 615, \$ 644; \$ 6AL; \$ 6FL; \$ 6NF; \$ 6VC

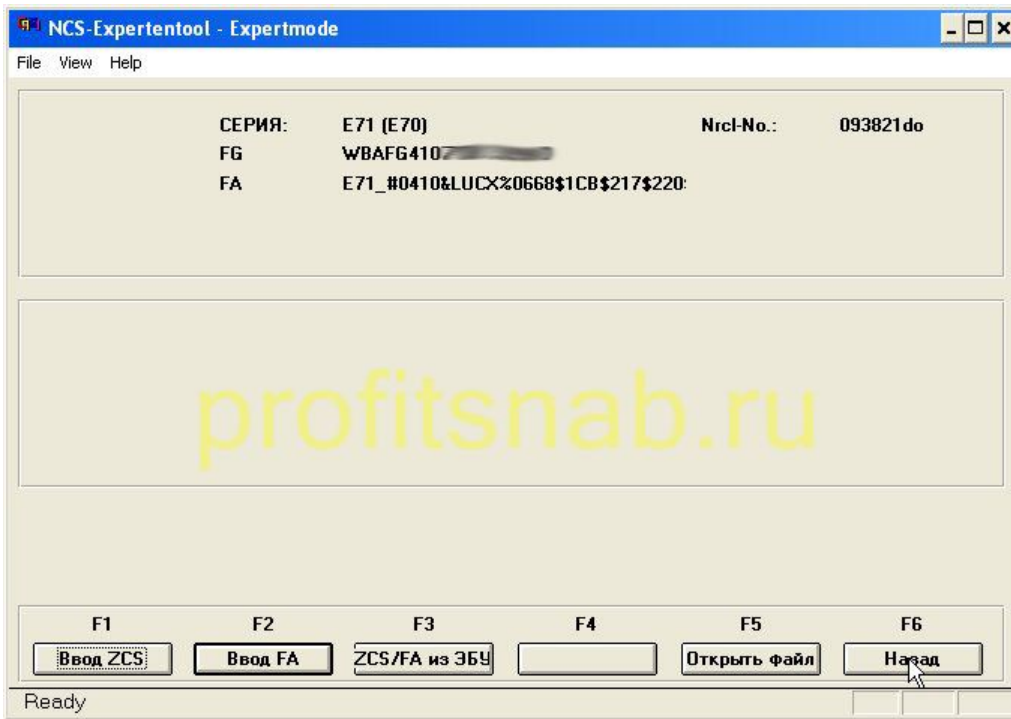


1.15 add \$ 6 NR ; \$ 7 SP , and when all you need is added, and do not need to be removed click OK

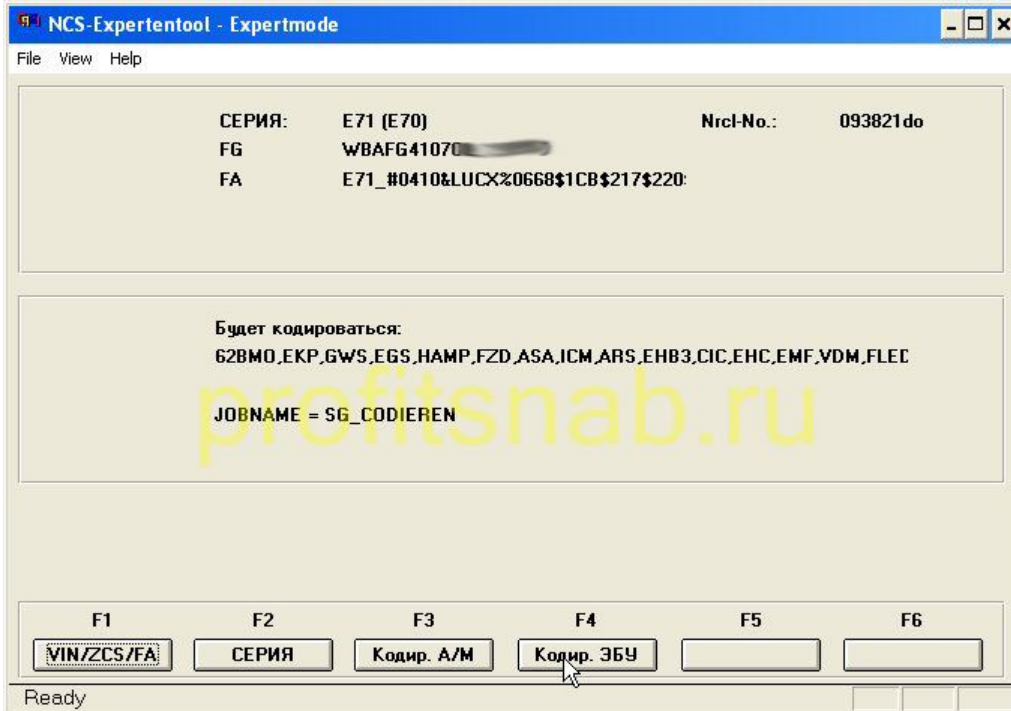


1.16 Push F 6 (back)

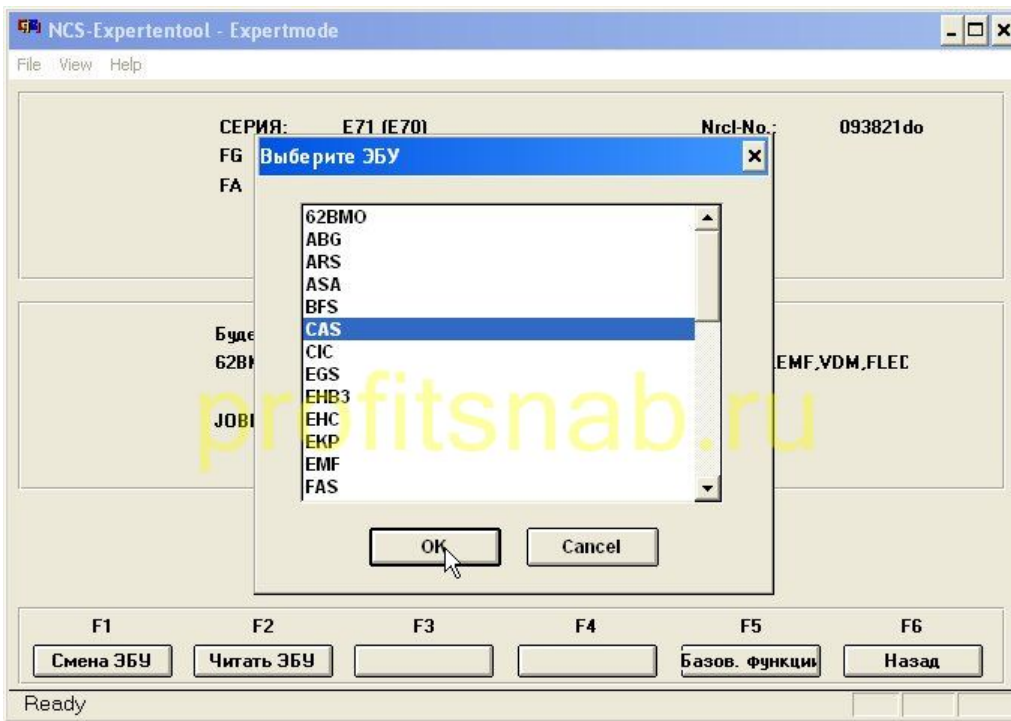




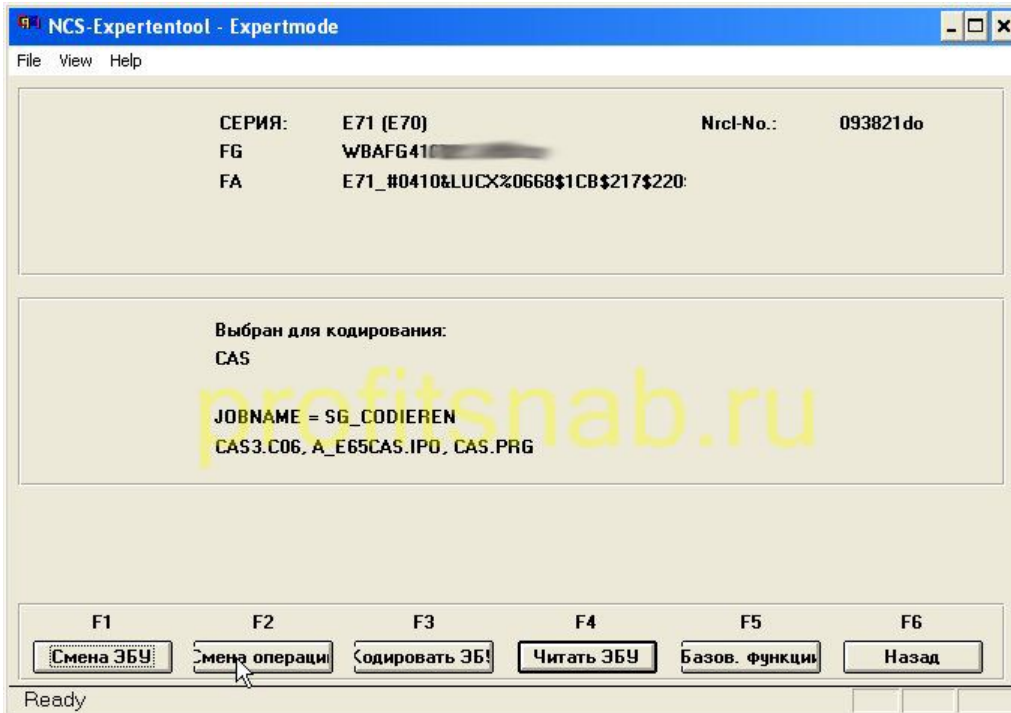
Click 1.17 F 4 (encrypt the computer)



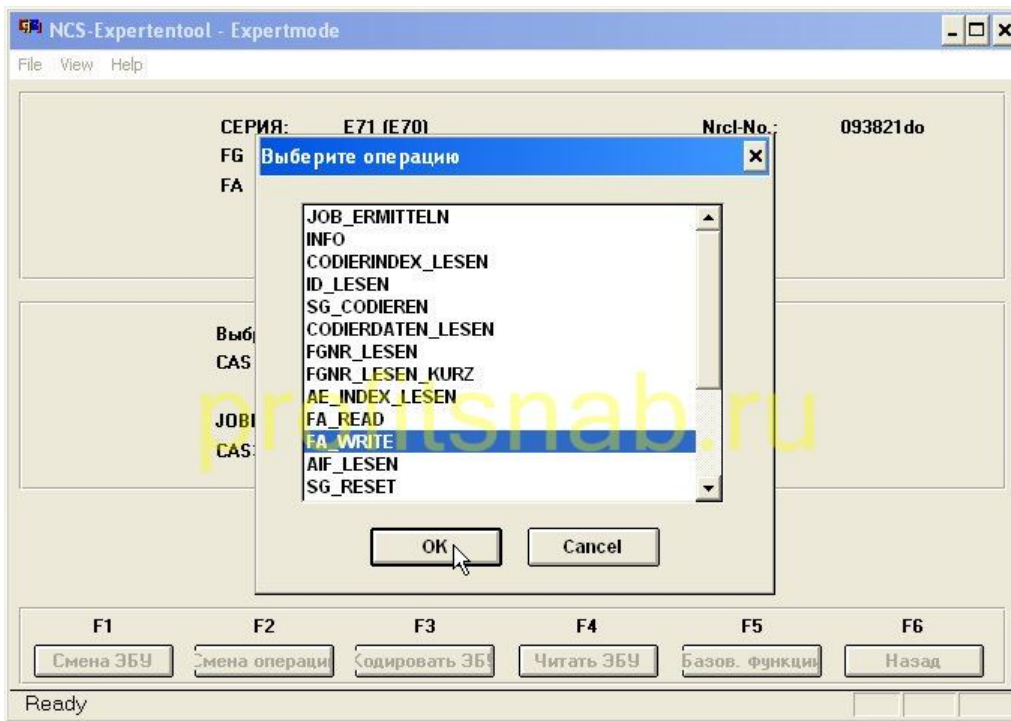
1.18 Choosing a block CAS click OK



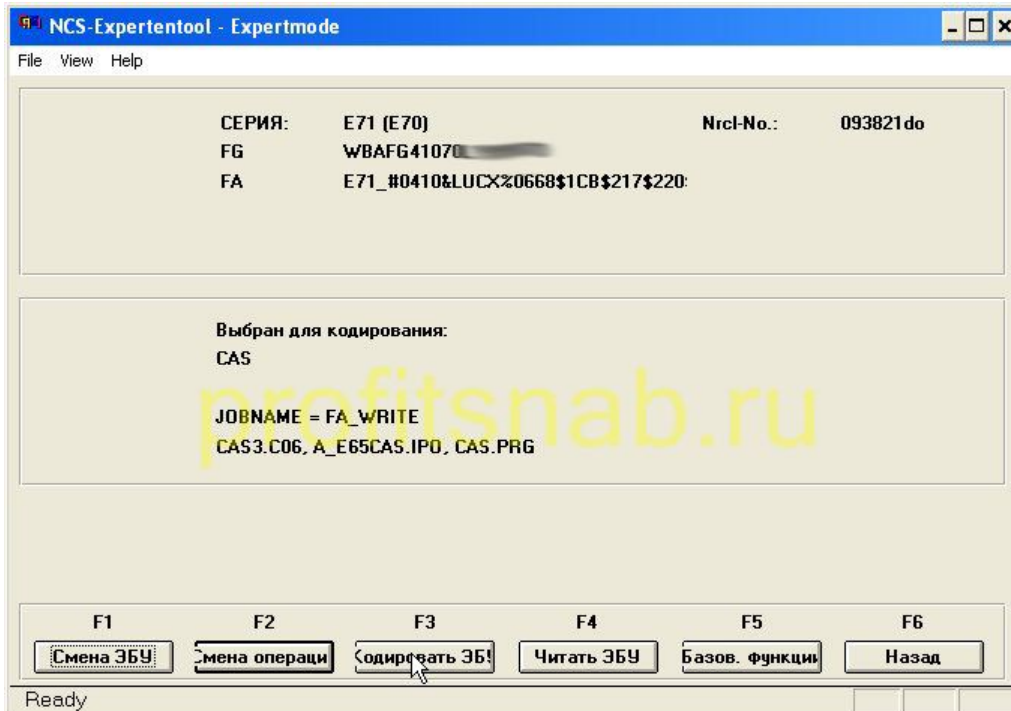
1.19 Press F2 (shift operation)



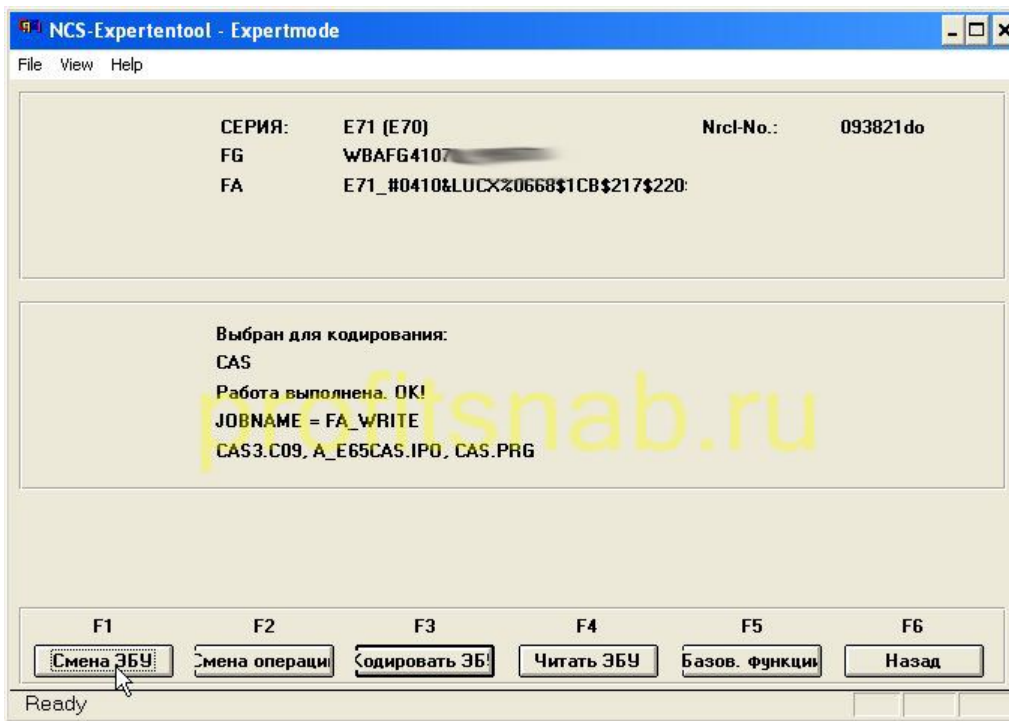
1.20 Select FA \_ WRITE click OK



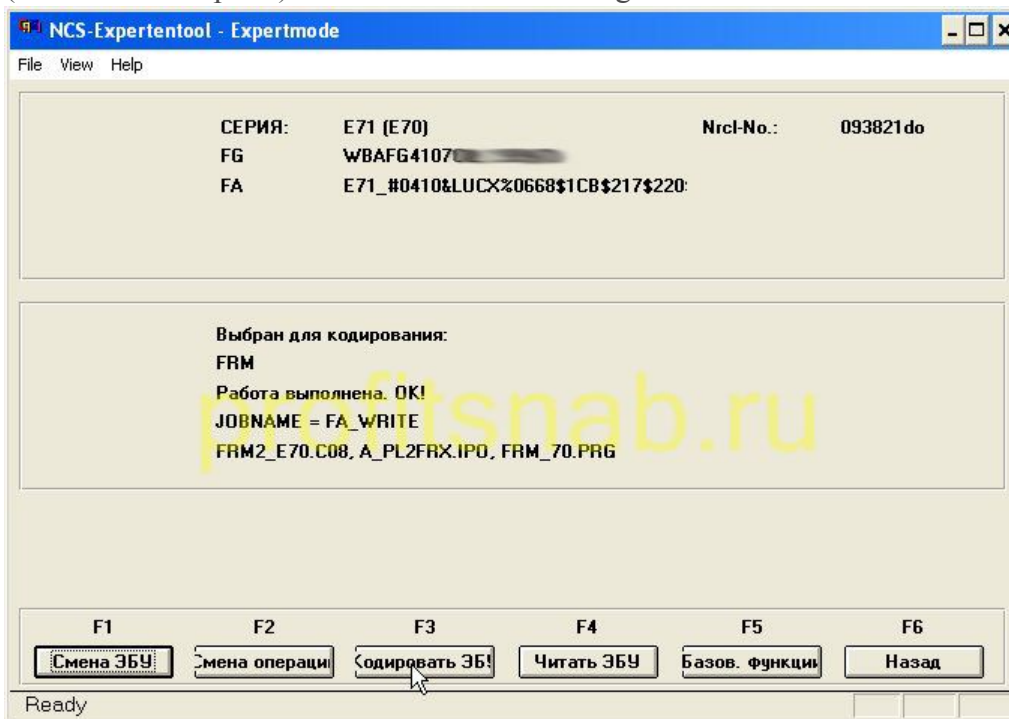
1.21 Finally, press F3 (encode the computer)



1.22 There is a coding, we get the message "This work OK ! ". Actually FA in the block CAS , we have changed, and now just need to change it in the blockFRM , click the button F 1 Change ECU



1.23 Choosing a block FRM and click OK, the next screen again press F3 (encode the computer). At this time the FA changes in the block FRM

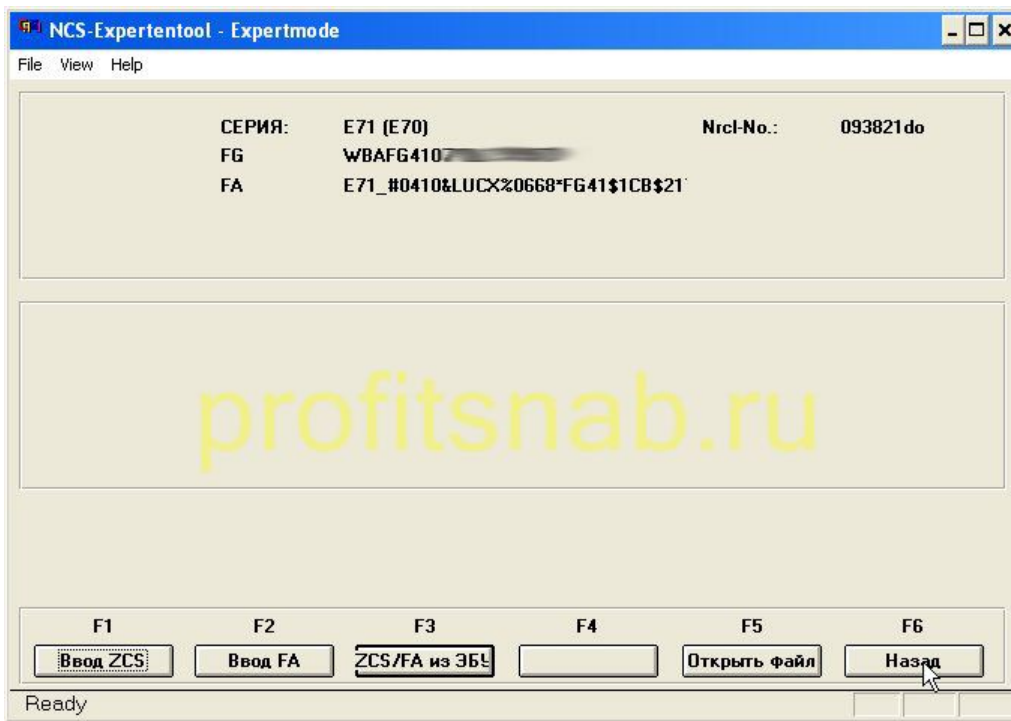


The first stage of coding is completed, VO (Vehicle Order), we have changed. Go to code directly blocks CIC and Combox (MEDIA)

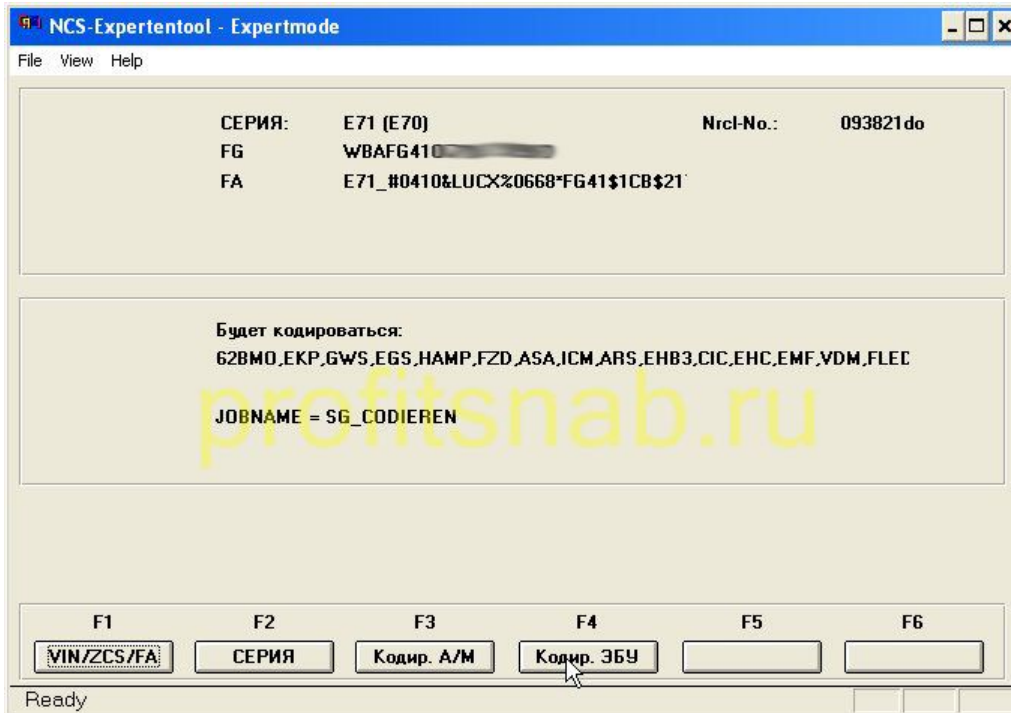
Coded block CIC:

2.1 Do steps 1.2-1.8

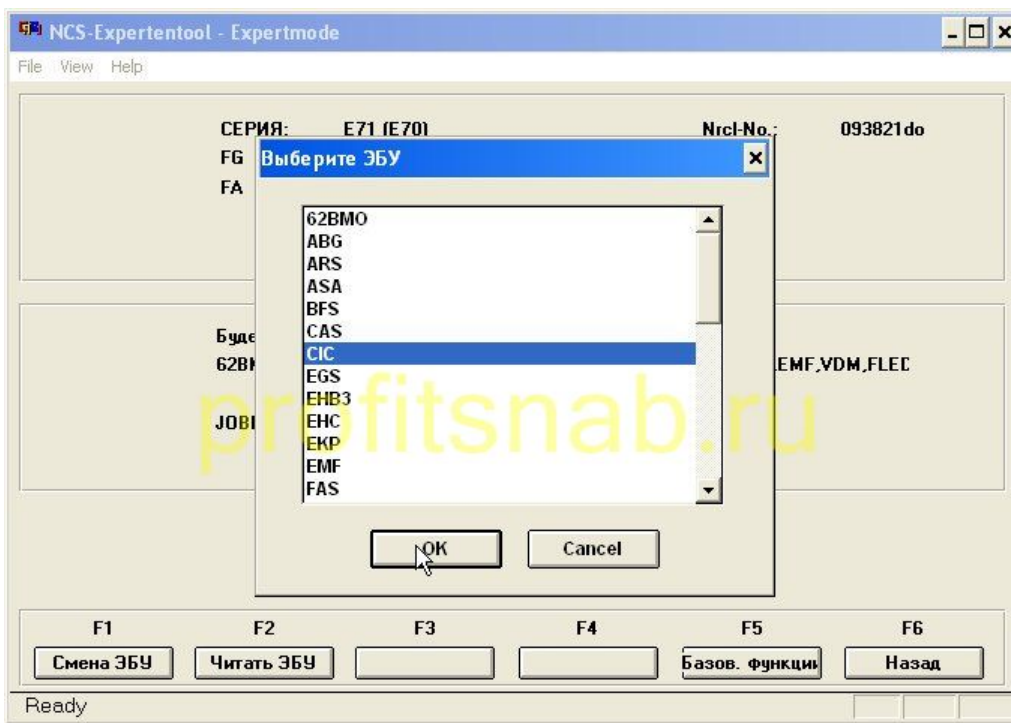
2.2 press F 6 (back)



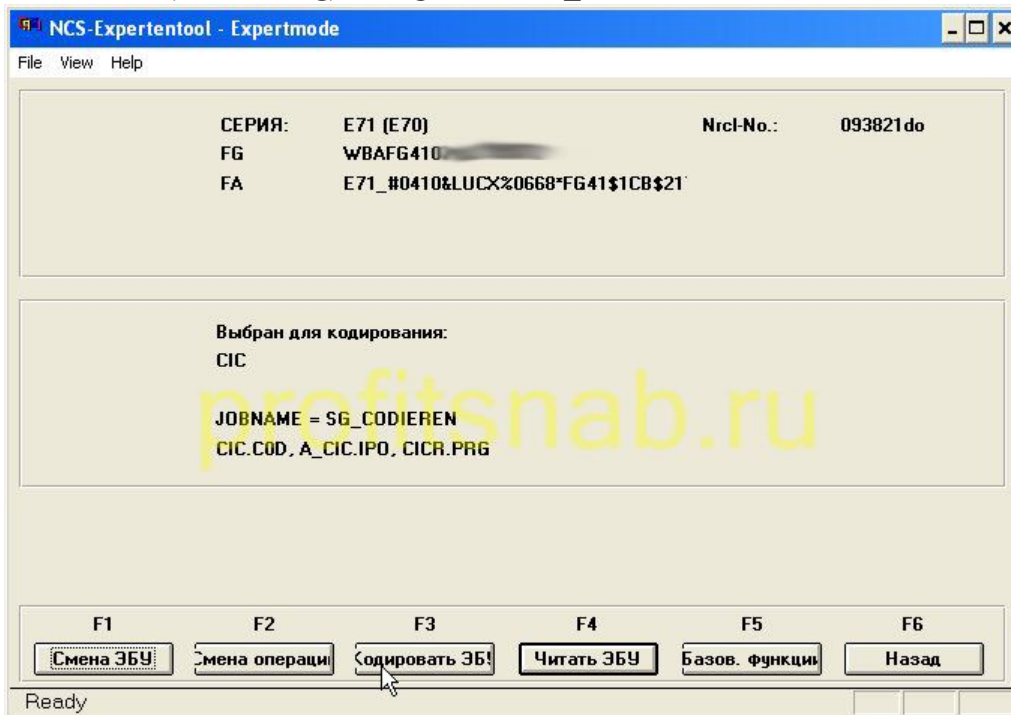
2.3 press F 4 (encrypt the computer)



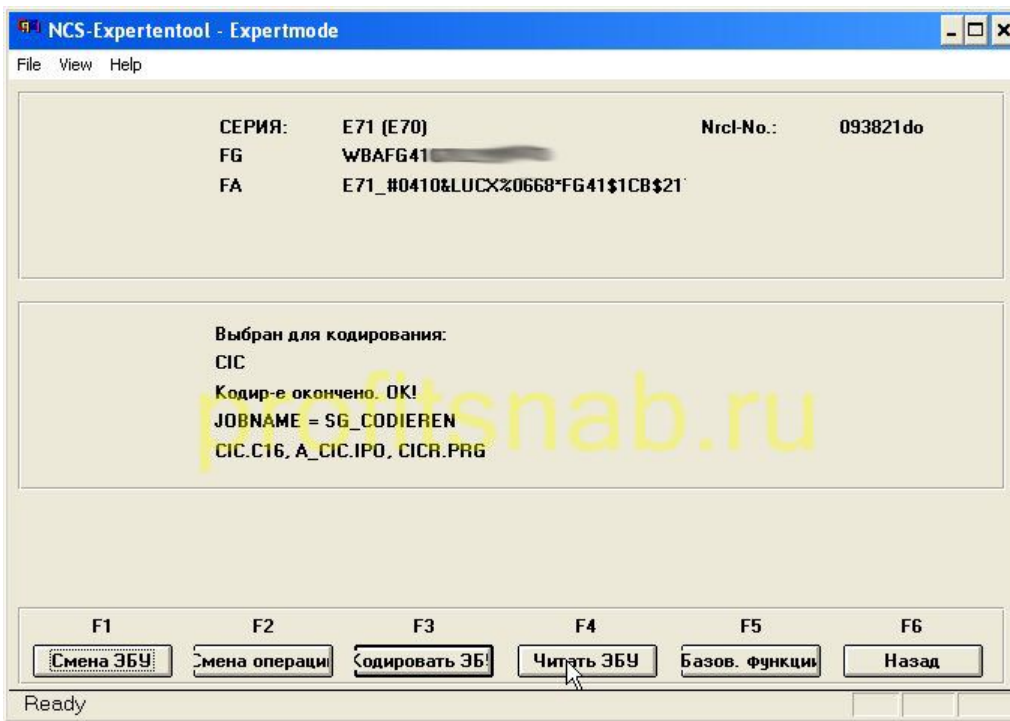
2.4 in the new window select the block CIC and click OK



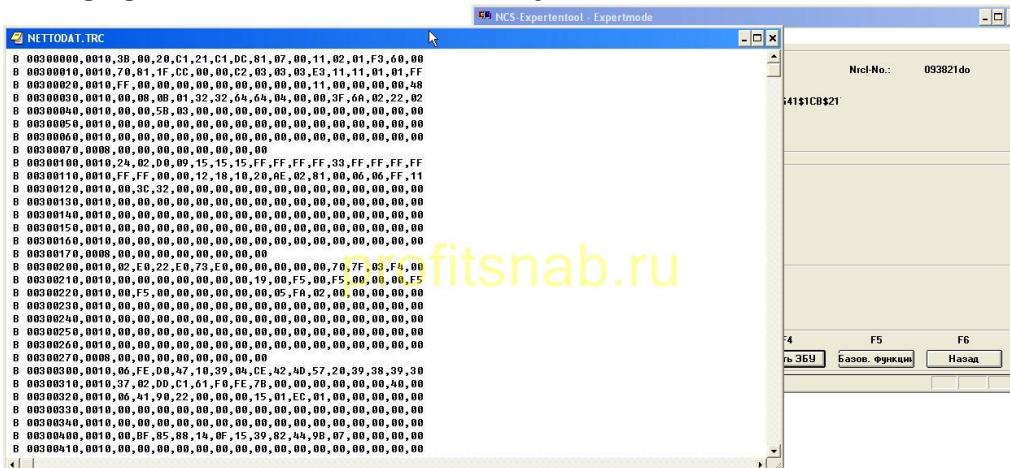
2.5 Click F3 (ECU coding), the operation SG\_CODIEREN



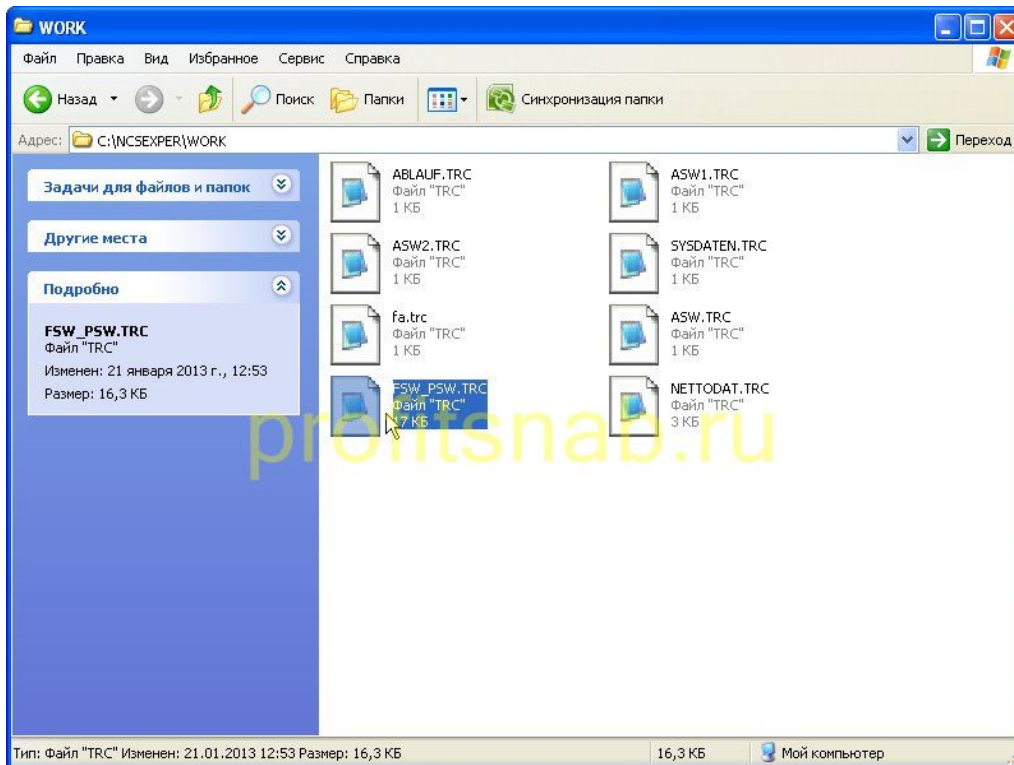
2.6 If at this point you have what the errors, then most likely you have not updated the data files " SP Daten ". Thus, CIC will reboot, the message "coding completed OK ", the navigation system is now coded in accordance with the new bundle, but we still need to include some features manually. (Internet Browser, BMW Online , Connected Drive ). Press F 4 (Read ECU)



### 2.7 Pop-up window NETTODAT . TRC , just close it



08.02 Go to the drive C:\NCSEXPER\WORK and using notepad open the fileFSW\_PSW . TRC



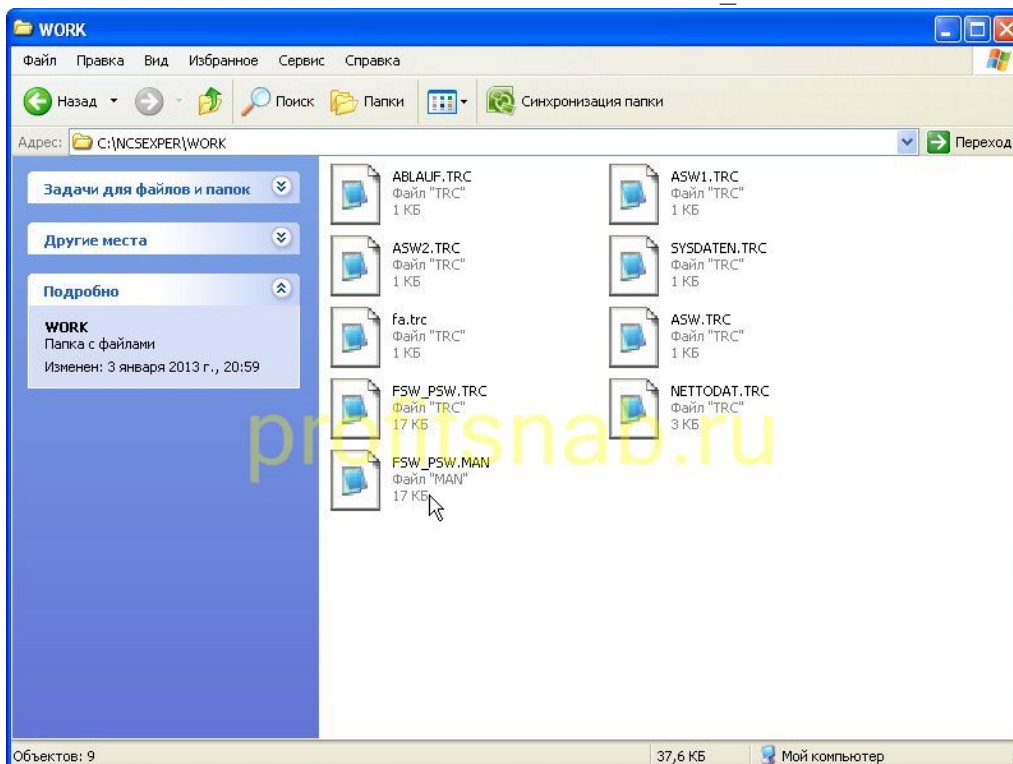
2.9 Edit the following fields \ values:

field	Description for old	new value	function
CONNECTED_DRIVE	nicht_activ	active	inclusion menu Connected Drive
ONLINE_BROWSER_C0D	nicht_activ	beide_activ	Internet
ONLINE_BROWSER_LIVE	nicht_activ	active	BMW online
MACRO_CAM_LEGALDISCLAIMER			removes annoying sign when the rear view camera
MACRO_CAM_LEGALDISCLAIMER	ld_mit_timeout	kein_ld	

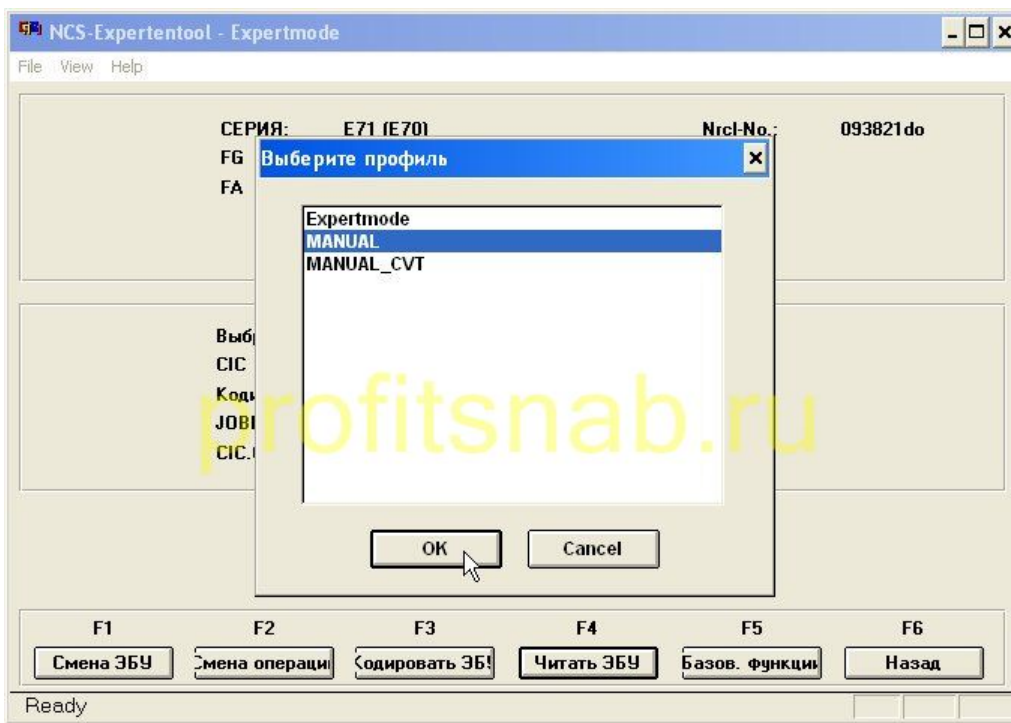




10.02 Save the edited file in the same folder as the FSW \_ PSW . MAN



2.11 Click File Load Profile , in the dialog box, select Manual and click OK



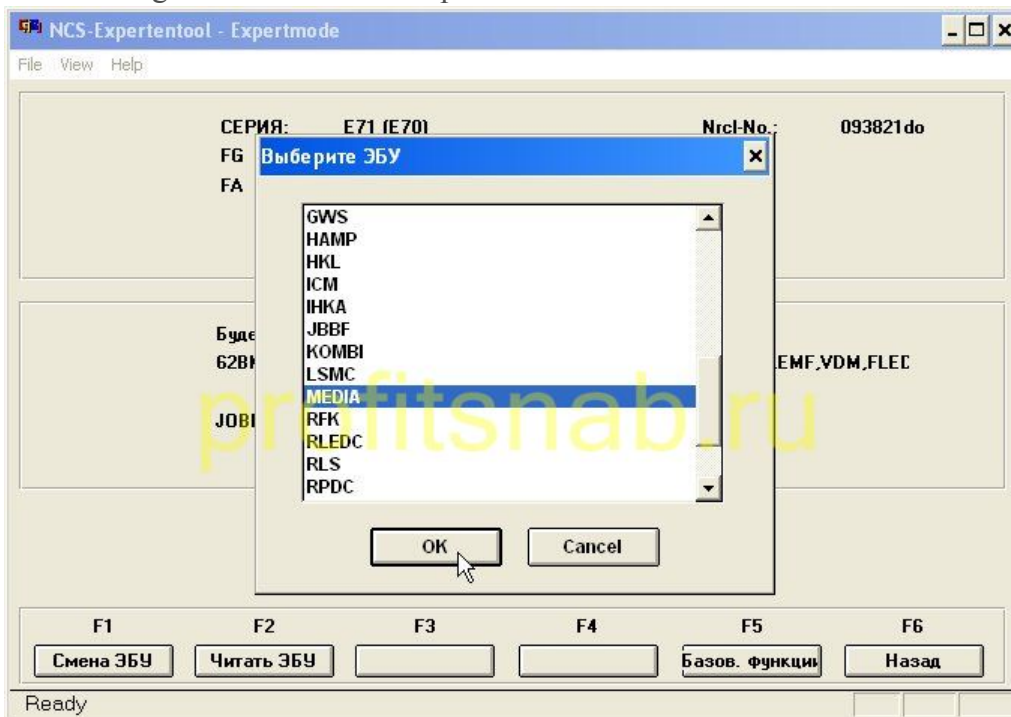
2.12 Next, perform paragraphs 2.3-2.5, but under the profile Manual, block CIC encode from a file that we edited. CIC will reboot and the menu will appear Connected drive, in which the items are: BMW online, internet, BMW apps, Plug-in.

2.13 Remove FSW\_PSW.MAN of the folders: \NCSEXPER \ WORK

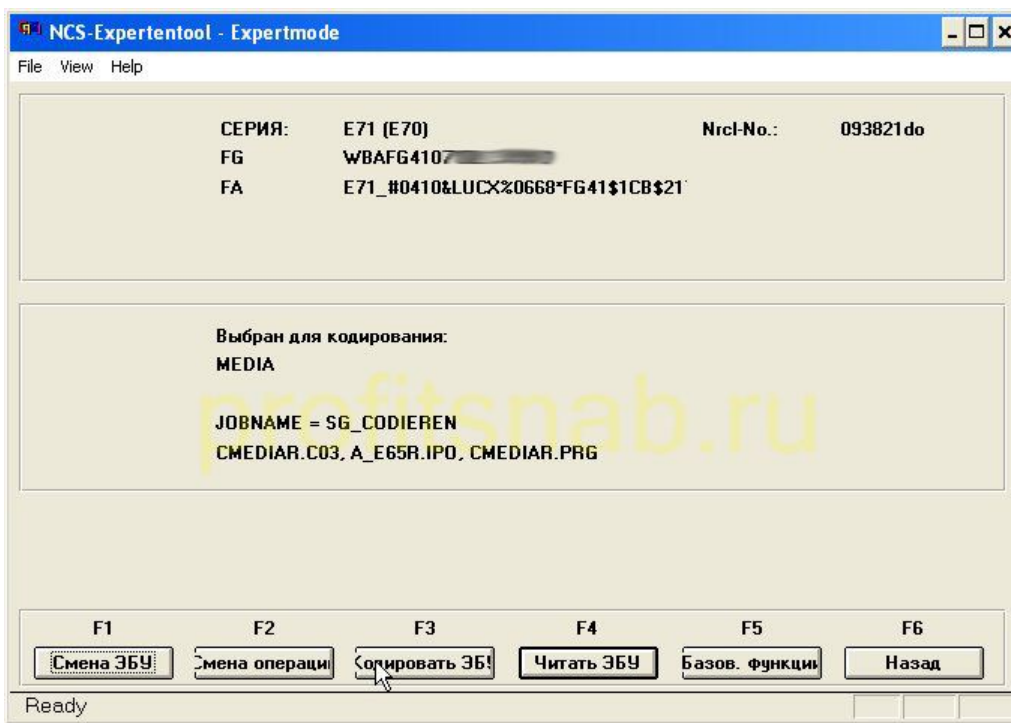
Now encode itself Combox.

3.1 Do steps further 1.2-1.8 2.2-2.3

3.2 Choosing a block MEDIA and press OK



03.03 F3 (encode the computer)

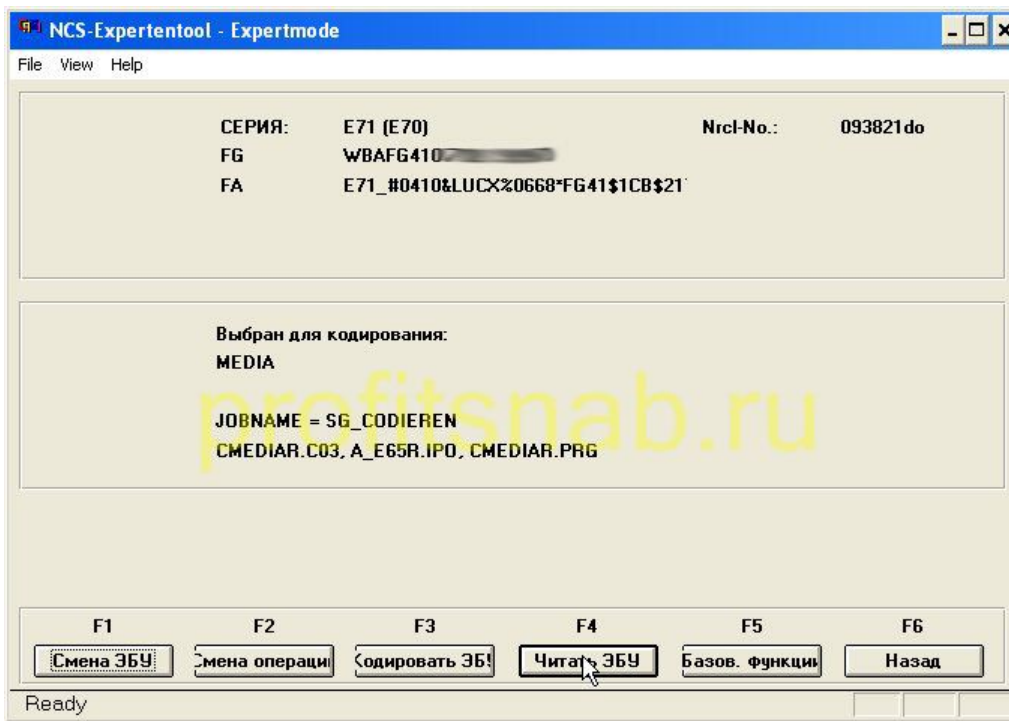


Combox encoded, it should work.

The following items are required only for those whose cars were not designed for the Russian market, for example-fitting from Germany. In this case, when you try to go online, click Connected drive you will get a message that the internet in the country is not supported. This is due to the fact that these services are paid in Europe, and in the tasting room combox registered your car, where the server and determines whether your car, restricting access to the Internet. You must assign the unit number of the vehicle combox wines destined for the Russian market to get free access to these services. To do this, first you need to find the number of wines such a vehicle. I will not give away tasting rooms, but I will give a hint. Some BMW dealers publish tasting rooms available cars on their websites. We assume that you have found the "right" VIN. Now put this in his combox.

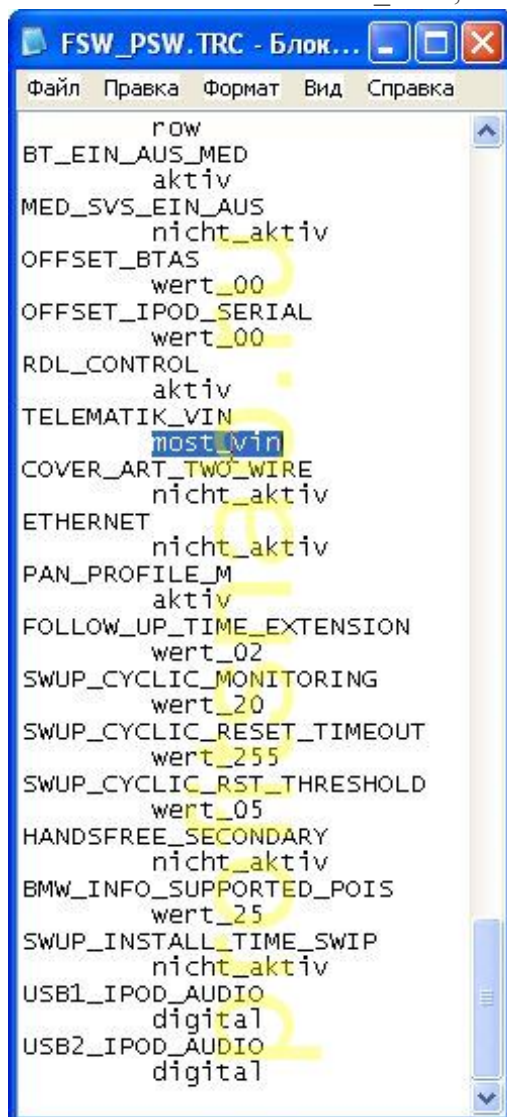
4.1 Do steps 3.1-3.2

4.2 press F 4 (read computer)



4.3 carry out paragraph 2.8

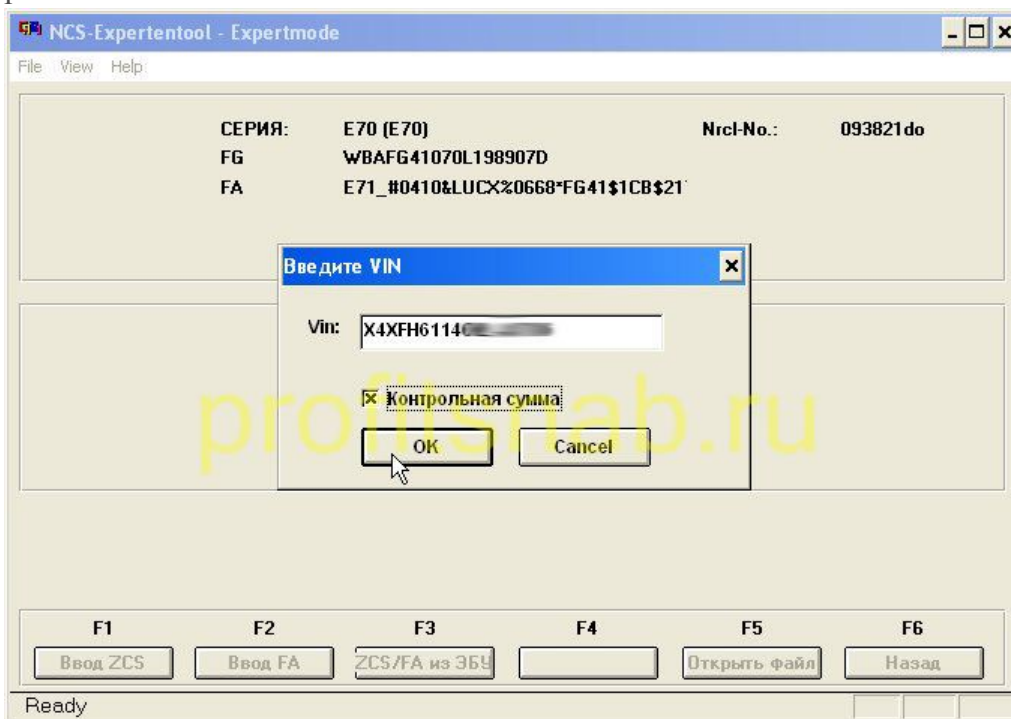
4.4 Edit Field with automatic \_ Vin , meaning Most \_ Vin change the coding \_ Vin



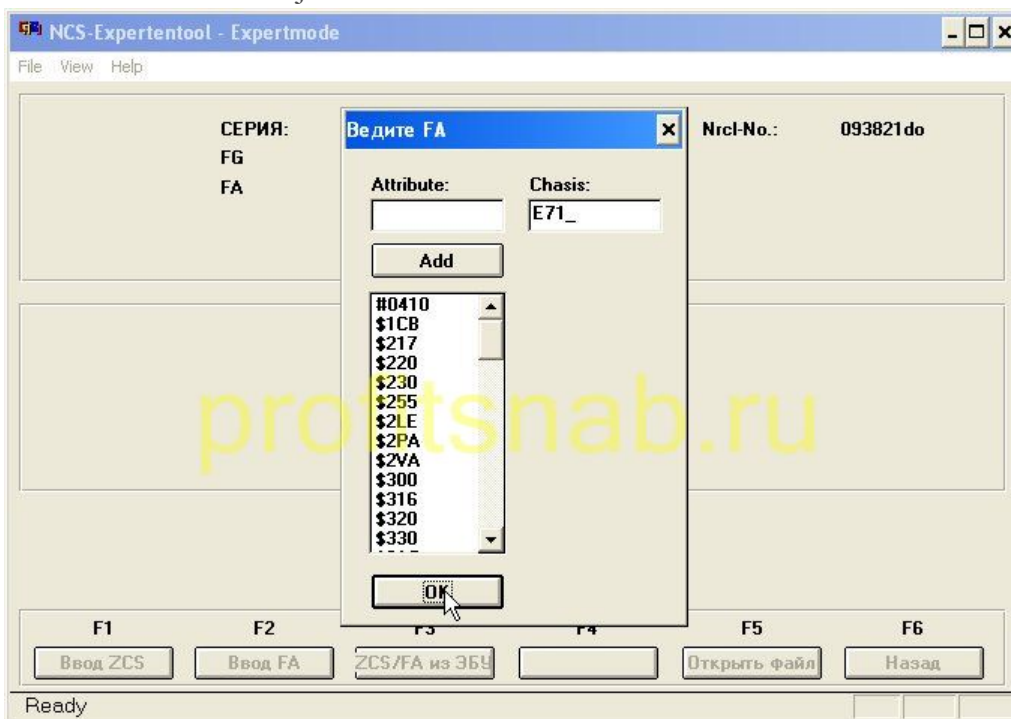
4.5 carry out paragraph 2.10

4.6 executes the 1.2-1.10

4.7, in the window that opens, write tasting room, which we found (again, it should be a number of wines of the new car designed for the Russian market), put a check in the "checksum" and click OK



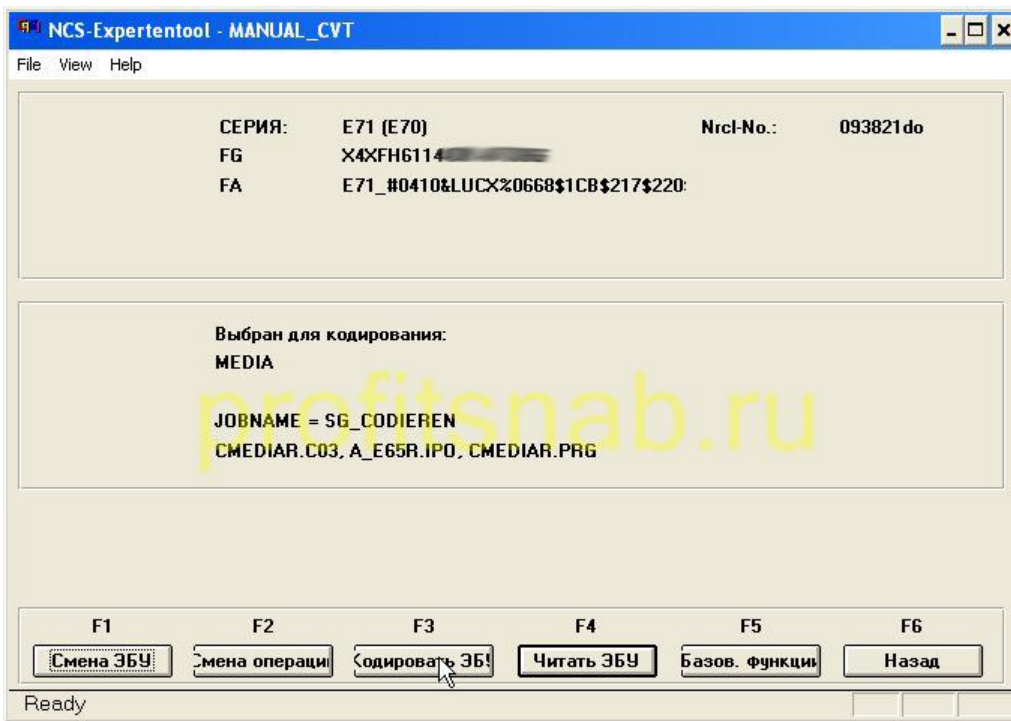
4.8 in the next window just click OK



Do steps 4.9 and 3.2, 2.2-2.3

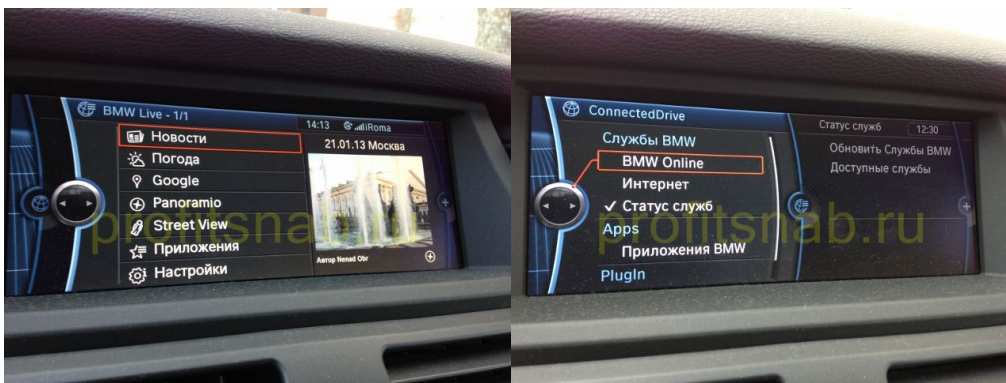
4.10 click file \ load profile, select **MANUAL CVT** and click OK. (If you select normal profile Manual, then most likely you'll get an error COAPI-1000)

4.11 press F 3 (encode the computer).



everything is ready, you can now use the Internet and all the advantages that gives BMW combox.





To disappear error SOS button to encode KOMBI unit under the new bundle, by following these steps:

- 5.1 following the points 1.2-1.8
- 5.2 following the points 2.2-2.3
- 5.3 select a unit and press OK KOMBI
- 5.4 F3 (ECU coding), the operation SG\_CODIEREN

And a few more options, if you are fascinated by the process of encoding:  
Automatic folding mirrors, central lock when closing:

Change in the unit value of

**FRM SPIEGEL\_KOMFORT\_EINKLAPP C** *nicht\_ activ* on *active*

Closing the trunk lid with a button on the key and key in the cabin:

Change in the unit value of

**HKL SCH\_TOEHKI** and **TASTER\_FBD C** *nicht\_ activ* to *active* ( also meaning **SCH\_FBD** must be *active* )

Every function outputs:

Change in the unit value of

**CAS KOMFORT\_EJECT C** *nicht\_ activ* to *active* ( also meaning **ER\_KEYOUT\_AUTOVR** must be *active* )